

# Addendum Summary

23168.0000, GREENVILLE ISD GMS AND LP WATERS PORTABLES, TRAVIS RENOVATION,  
AND GHS BOILER REPLACEMENT

**Date Issued: 08/22/2023.**

To: Greenville ISD  
4004 Moulton St,  
Greenville, TX, 75401



Addendum: 02

Prepared By: Lance Melton

---

This Addendum contains changes to the requirements of the contract drawings and/or project manual. Such changes shall be incorporated into the contract documents and shall apply to the work with the same meaning and force as if they had been included in the original documents. Wherever this Addendum modifies a portion of the paragraph of project manual or any portion of the drawing, the remainder of the paragraph of drawing affected shall remain in force.

The conditions of the basic project manual shall govern all work described in this Addendum. Wherever the conditions of work and the quality of quantity of materials or workmanship are not fully described in this Addendum, the conditions of work, etc. included in the basic project manual for similar items of work shall apply to the work described in this Addendum.

The "Conditions of the Contract" apply to all work described in this Addendum. The following changes shall be and are hereby made:

---

## BIDDING QUESTIONS:

1. Is pouring a new pad for boilers part of the scope? Current boilers have footings, but new ones will need a pad.  
4" concrete housekeeping pads will be sufficient.
2. Was there any thought on requiring a DA tank, spirotherm air and dirt separator since a new boiler system will be added to an older existing piping system and particulates will be circulating/recirculating throughout the system?  
System is scheduled to have a new expansion tank. An air/dirt separator can be added.

# Summary of Revisions

## SPECIFICATION REVISIONS:

### ITEM NO. 1.00 SECTION 10 11 00

- Maprail (TW-1) added to specification.

## DRAWING REVISIONS, ARCH:

### ITEM NO. 1.01 SHEET A07-01 TRAVIS RENNOVATION

- Replace sheet in its entirety with attached changes:
  - Added Schluter trim to tile base on elevations 04/A07-01 & 05/A07-01, RE: Delta 1

End of Addendum Summary

CC: Gunter ISD

Attachments:

10 11 00, A07-01

*Please review this information and advise writer of any corrections, misunderstandings or additions within 3 business day*

## SECTION 10 11 00

### VISUAL DISPLAY UNITS

#### PART 1 - GENERAL

##### 1.1 SUMMARY

- A. Section Includes:
  - 1. Wall mounted markerboards and tackboards assemblies.
  - 2. **Maprail (TW-1).**
  - ~~3.~~ Markerboard accessories.

##### 1.2 ACTION SUBMITTALS

- A. Product Data: Technical data including construction details, material descriptions, dimensions of individual components and profiles, finishes, and accessories for visual display units.
- B. Shop Drawings: Submit plans, elevations, sections, details, and attachment to other work.
  - 1. Show locations of panel joints. Show locations of field assembled joints for factory fabricated units too large to ship in one piece.
  - 2. Show locations and layout of special purpose graphics.
  - 3. Include sections of typical trim members.
- C. Samples: Submit for each type of visual display unit indicated.
  - 1. Fabric: 12 inch square (305 mm square) off each fabric type and color.
- D. Product Schedule: Submit visual display unit schedule using same designations indicated on Drawings.

##### 1.3 CLOSEOUT SUBMITTALS

- A. Maintenance Data: Submit data for visual display units to include in maintenance manuals.

##### 1.4 QUALITY ASSURANCE

- A. Installer Qualifications: An entity having minimum 5 years documented experience that employs installers and supervisors trained and approved by manufacturer.
- B. Preinstallation Conference: Conduct conference at site.

## 1.5 DELIVERY, STORAGE, AND HANDLING

- A. Deliver factory fabricated visual display units completely assembled in one piece. If dimensions exceed maximum manufactured unit size, or if unit size is impracticable to ship in one piece, provide two or more pieces with joints in locations indicated on approved Shop Drawings.

## 1.6 FIELD CONDITIONS

- A. Environmental Limitations: Do not deliver or install visual display units until spaces are enclosed and weathertight, wet work in spaces is complete and dry, work above ceilings is complete, and temporary HVAC system is operating and maintaining ambient temperature and humidity conditions at occupancy levels during the remainder of the construction period.

## 1.7 WARRANTY

- A. Porcelain Enamel Face Sheets: Written warranty signed by the manufacturer in which the manufacturer agrees to repair or replace porcelain enamel face sheets that fail in materials or workmanship within specified warranty period.
  - 1. Failures include, but are not limited to, the following:
    - a. Surfaces lose original writing and erasing qualities.
    - b. Surfaces exhibit crazing, cracking, or flaking.
  - 2. Warranty Period: 50 years from date of Substantial Completion.

## PART 2 - PRODUCTS

### 2.1 PERFORMANCE REQUIREMENTS

- A. Surface Burning Characteristics: Comply with ASTM E 84; testing by a qualified testing agency. Identify products with appropriate markings of applicable testing agency.
  - 1. Flame Spread Index: 25 or less.
  - 2. Smoke-Developed Index: 450 or less.

### 2.2 VISUAL DISPLAY BOARD ASSEMBLY

- A. Manufacturers: Subject to compliance with requirements, provide products by one of the following:
  - 1. BestRite Chalkboards Company, MooreCo, Inc.
  - 2. Claridge Products and Equipment, Inc.
  - 3. PolyVision Corporation, a Steelcase company.
  - 4. US Porcelain Manufacturers.

- B. Visual Display Board Assembly: Factory fabricated.
  - 1. Assembly: Markerboard and tackboard.
  - 2. Corners: Square.
  - 3. Width: Indicated on Drawings.
  - 4. Height: Indicated on Drawings.
  - 5. Mounting Method: Direct to wall.
  
- C. Porcelain Enamel Markerboard Panels: Balanced, high pressure, factory laminated markerboard assembly of three ply construction, consisting of moisture barrier backing, core material, and porcelain enamel face sheet with low gloss finish. Laminate panels under heat and pressure with flexible waterproof adhesive.
  - 1. Panel Backing: Steel plate, minimum 0.021 inch (0.50 mm) uncoated base metal thickness.
  - 2. Porcelain Enamel Coating: 0.0025 inch (0.0635 mm) Nickel Cobalt primer; 0.003 inch (0.0762 m) thick writing surface; and 0.0025 inch (0.0635 mm) Nickel Cobalt ground coat, reverse side complying with O'Hammel Model M-894; ASTM C 346.
  - 3. Core: 7/16 inch (11 mm) MDF with moisture barrier backing.
  - 4. Laminating Adhesive: Moisture resistant thermoplastic type recommended by manufacturer.
  - 5. Joints: Concealed splice joints for writing surfaces or H-bar joint strip.
  - 6. Color: White.
  - 7. Basis of Design: Claridge LCS3.
  
- D. Tackboard Panel: Vinyl fabric wrapped tackboard panel laminated to hardwood backing with wrapped edge.
  - 1. Fabric Wrapped Edge: Wrap edge of tackboard panel with fabric facing.
  - 2. Core: 1/4 inch (6 mm) thick hardboard.
  - 3. Color and Pattern: Selected by Architect.
  - 4. Basis of Design: Claridge 3400 Series.
  
- E. Aluminum Frames and Trim: Fabricated from not less than 0.062 inch (1.57 mm) thick, extruded aluminum; standard size and shape.
  - 1. Field Applied Trim: Snap on trim with no visible screws or exposed joints.
  - 2. Aluminum Finish: Clear anodic finish.
  
- F. Joints: Make joints only where total length exceeds maximum manufactured length. Fabricate with minimum number of joints, indicated on approved Shop Drawings.
  
- G. Combination Assemblies: Provide hidden spline between abutting sections of visual display panels.
  
- H. Chalktray: Continuous, solid type; extruded aluminum with ribbed section and smoothly curved exposed ends.

- I. Special Purpose Graphics: Fuse or paint music staff lines graphic onto surface of visual display unit, in locations indicated.

## **2.3 MAPRAIL**

### **A. Maprail (TW-1):**

1. **Basis-of-Design Product: Ghent; Maprail.**
2. **Heavy grade aluminum rail and gripping mechanisms.**
3. **Sizes: 1 inch high overall. Length as shown in Drawings.**
4. **Insert: Natural cork.**

## **2.3.2.4 ACCESSORIES**

- A. Accessory Starter Kit: Set of four dry erase markers, eraser, magnets, recommended board cleaner for each markerboard and glass writing surface.
- B. Magnetic Marker Holder: Magnetic cup with eraser holder.
- C. Markerboard Cleaner: Type recommended by marker board manufacturer.

## **2.4.2.5 MATERIALS**

- A. Porcelain Enamel Face Sheet: PEI-1002, with face sheet manufacturer's two or three coat process.
- B. Vinyl Fabric: Mildew resistant, washable, complying with ASTM F 793/F 793M, Type II, burlap weave; weighing not less than 13 oz./sq. yd. (440 g/sq. m); with surface burning characteristics indicated.
- C. Hardboard: ANSI A135.4, tempered.
- D. Extruded Aluminum: ASTM B 221 (ASTM B 221M), Alloy 6063.
- E. Adhesives for Field Application: Mildew resistant, nonstaining adhesive for use with specific type of panels, sheets, or assemblies; and for substrate application; as recommended in writing by visual display unit manufacturer.

## **2.5.2.6 FINISH REQUIREMENTS**

- A. Comply with NAAMM/NOMMA 500 for recommendations for applying and designating finishes.
- B. Protect mechanical finishes on exposed surfaces from damage by applying a strippable, temporary protective covering before shipping.

- C. Appearance of Finished Work: Noticeable variations in same piece are unacceptable. Variations in appearance of adjoining components are acceptable if they are within the range of approved Samples and are assembled or installed to minimize contrast.

## ~~2.6~~2.7 ALUMINUM FINISHES

- A. Clear Anodic Finish: AAMA 611, AA-M12C22A31, Class II, 0.010 mm or thicker.

## PART 3 - EXECUTION

### 3.1 EXAMINATION

- A. Examine substrates and conditions for compliance with requirements for installation tolerances, surface conditions of wall, and conditions affecting performance of the work. Examine walls and partitions for proper preparation and backing for visual display units. Proceed with installation after correcting unsatisfactory conditions.

### 3.2 PREPARATION

- A. Comply with manufacturer's written instructions for surface preparation.
- B. Clean substrates of substances, including dirt, mold, and mildew, that impair the performance of and affect the smooth, finished surfaces of visual display boards.
- C. Prepare surfaces to achieve a smooth, dry, clean surface free of flaking, unsound coatings, cracks, defects, projections, depressions, and substances that will impair bond between visual display units and wall surfaces.
- D. Prime wall surfaces indicated to receive visual display units and as recommended in writing by primer/sealer manufacturer and visual display unit manufacturer.

### 3.3 INSTALLATION

- A. Install visual display surfaces in locations and at mounting heights indicated on Drawings, or if not indicated, at heights indicated below. Keep perimeter lines straight, level, and plumb. Provide grounds, clips, backing materials, adhesives, brackets, anchors, trim, and accessories necessary for complete installation.
- B. Factory Fabricated Visual Display Board Assemblies: Attach concealed clips, hangers, and grounds to wall surfaces and to visual display board assemblies with fasteners at not more than 16 inches (400 mm) o.c. Secure tops and bottoms of boards to walls.
- C. Visual Display Board Assembly Mounting Heights: Install visual display units at mounting heights indicated on Drawings, or if not indicated, at heights indicated below.
  - 1. Mounting Height for Grades K through 3: 24 inches (610mm) inches (mm) above finished floor to top of chalktray.

2. Mounting Height for Grades 4 through 6: 28 inches (711 mm) inches (mm) above finished floor to top of chalktray.
3. Mounting Height for Grades 7 and Higher: 36 (914) inches (mm) above finished floor to top of chalktray.

#### 3.4 CLEANING AND PROTECTION

- A. Clean visual display units in accordance with manufacturer's written instructions. Attach one removable cleaning instructions label to visual display unit in each room.
- B. Touch up factory applied finishes to restore damaged or soiled areas.
- C. Cover and protect visual display units after installation and cleaning.

**END OF SECTION**



**GENERAL MILLWORK NOTES**

- ALL MILLWORK TO CONFORM TO AWI STANDARDS. U.N.O. REFER TO AWI MILLWORK STANDARDS FOR DESIGN DESIGNATIONS.
- PROVIDE SIDESPLASHES WHERE COUNTERTOPS ADJUT WALLS AT SIDES. U.N.O.
- PROVIDE COUNTERTOP BRACE SUPPORTS AT 48" O.C. MAX. @ KNEE SPACES & LAVATORY COUNTERS. U.N.O.
- PROVIDE 2" DIA. GROMMETS AT ALL WORKSTATIONS WITH KNEE SPACES AND WHERE ACCESS TO POWER AND LOW VOLTAGE IS NEEDED.
- PROVIDE BOTTOM CLOSURE FOR FILLER PANELS AT TOE SPACE & BOTTOM OF UPPER WALL CABINETS TO SEAL TIGHT.
- PROVIDE RUBBER BASE FOR ALL TOE KICK RECESSES TO MATCH RUBBER BASE IN ROOM.
- PROVIDE MARINE GRADE PLYWOOD AT ALL WET LOCATIONS (ENTIRE COUNTERTOP AND BACKSPLASHES).
- ALL MILLWORK TO BE CAULKED TO WALLS.
- INSTALL (2) SILENCERS AT EACH DOOR OR DRAWER ((3) ON DOORS OVER 42" TALL).
- CONTRACTOR TO ENSURE TOP AND BOTTOM VOIDS BETWEEN CORNER CABINETS AND FILLER PANELS AND SHEETROCK ON ALL WALLS, BOOKCASES, AND TALL CABINET'S ARE CLOSED.
- PROVIDE WALL STOP AT TEACHERS CABINET AND TALL STORAGE CABINET DOORS ADJACENT TO WALL.
- NO SPLICES ON LAMINATE PIECES LESS THAN 144" LONG.
- ENSURE FILE DRAWERS TO ACCOMMODATE 8 1/2" X 11" PENDANT EX HANGING FILES WITH TABS FRONT TO REAR. TYP.
- EXPOSED CABINET INTERIORS TO MATCH VERTICAL FINISH.
- CONTRACTOR TO COORDINATE MECHANICAL / PLUMBING / ELECTRICAL REQUIREMENTS AND APPLIANCES WITH MILLWORK.
- FILE DRAWER CABINETS: 4-SIDED DRAWER BOX WITH DRAWER FRONT ATTACHED.

**CORGAN**

CORGAN  
401 N. Houston St  
Dallas, TX 75202  
T: 214-748-2000

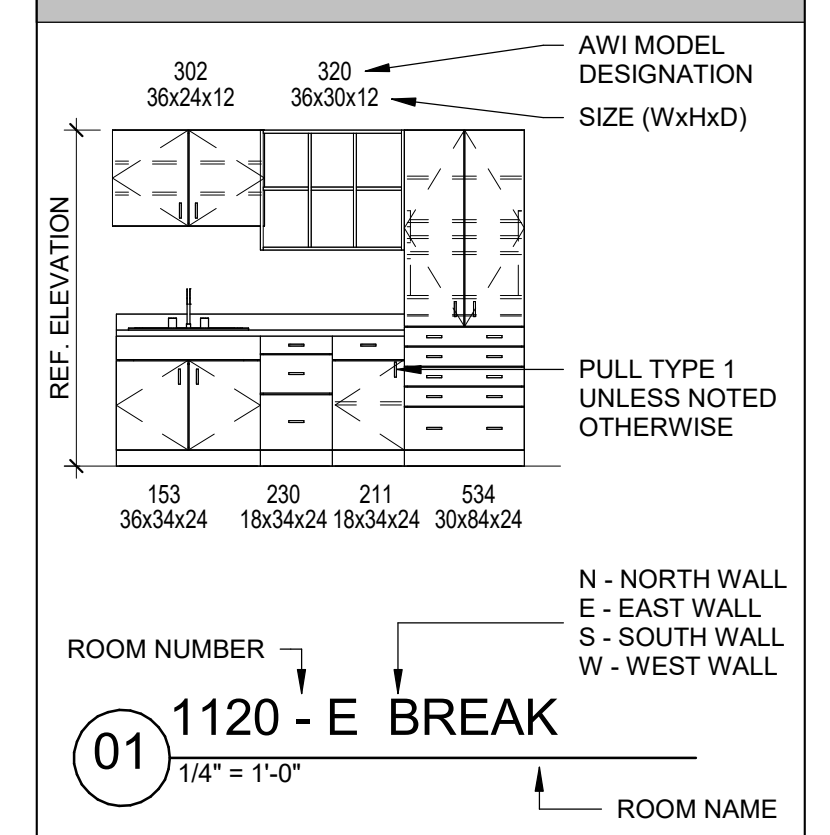
**ISSUES**

1	07/27/2023	ISSUE FOR CONSTRUCTION
2		
3		
4		
5		
6		
7		
8		
9		
10		

**REVISIONS**

1	8.21.2023	ADDENDUM 02
---	-----------	-------------

**MILLWORK LEGEND**



**SPECIALTY EQUIPMENT**

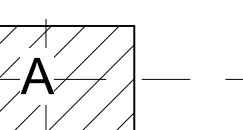
CODE	DESCRIPTION
C	COFFEE MAKER, OFCI
F	REFRIGERATOR, CFCI
M	MICROWAVE, OFCI
MB-12	MARKER BOARD (4H X 12W) CFCI
P	PROJECTOR, OFCI
PT	PAPER TOWEL DISPENSER, OFCI
S	SOAP DISPENSER, OFCI
TB-1	TACK BOARD (1" H) CFCI
TB-4	TACK BOARD (4" H X 4" W) CFCI
TV-1	DIGITAL DISPLAY MONITOR, OFCI
TW-1	TACKWALL (1" H) CFCI



**LANCE MELTON**  
Date of issue:  
07/27/2023

**TRAVIS T/6 GRADE CENTER RENOVATION**  
for  
Greenville Independent School District  
3201 Stanford St, Greenville, TX 75401

**KEYPLAN**

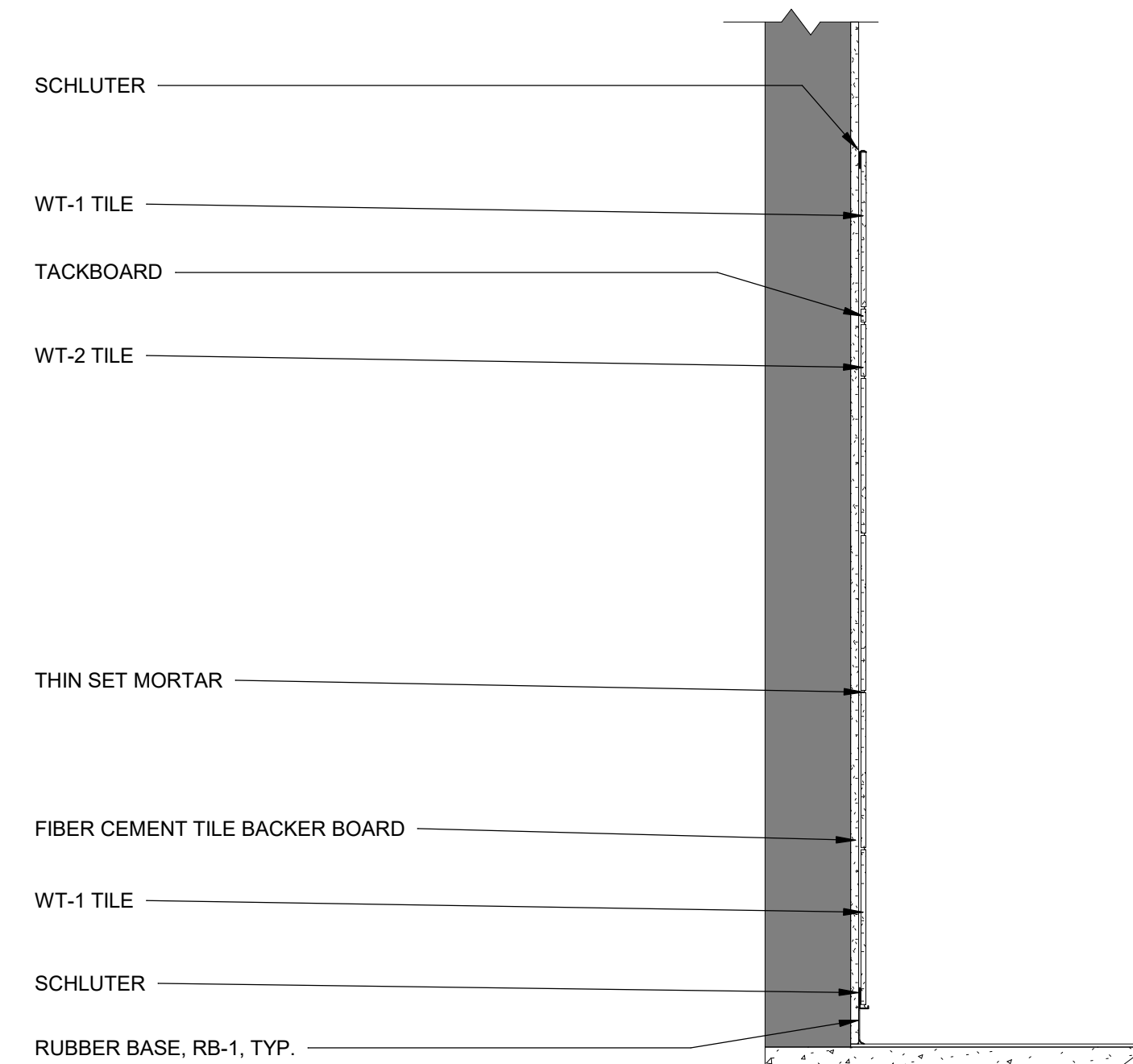


**INTERIOR ELEVATIONS & MILLWORK DETAILS**

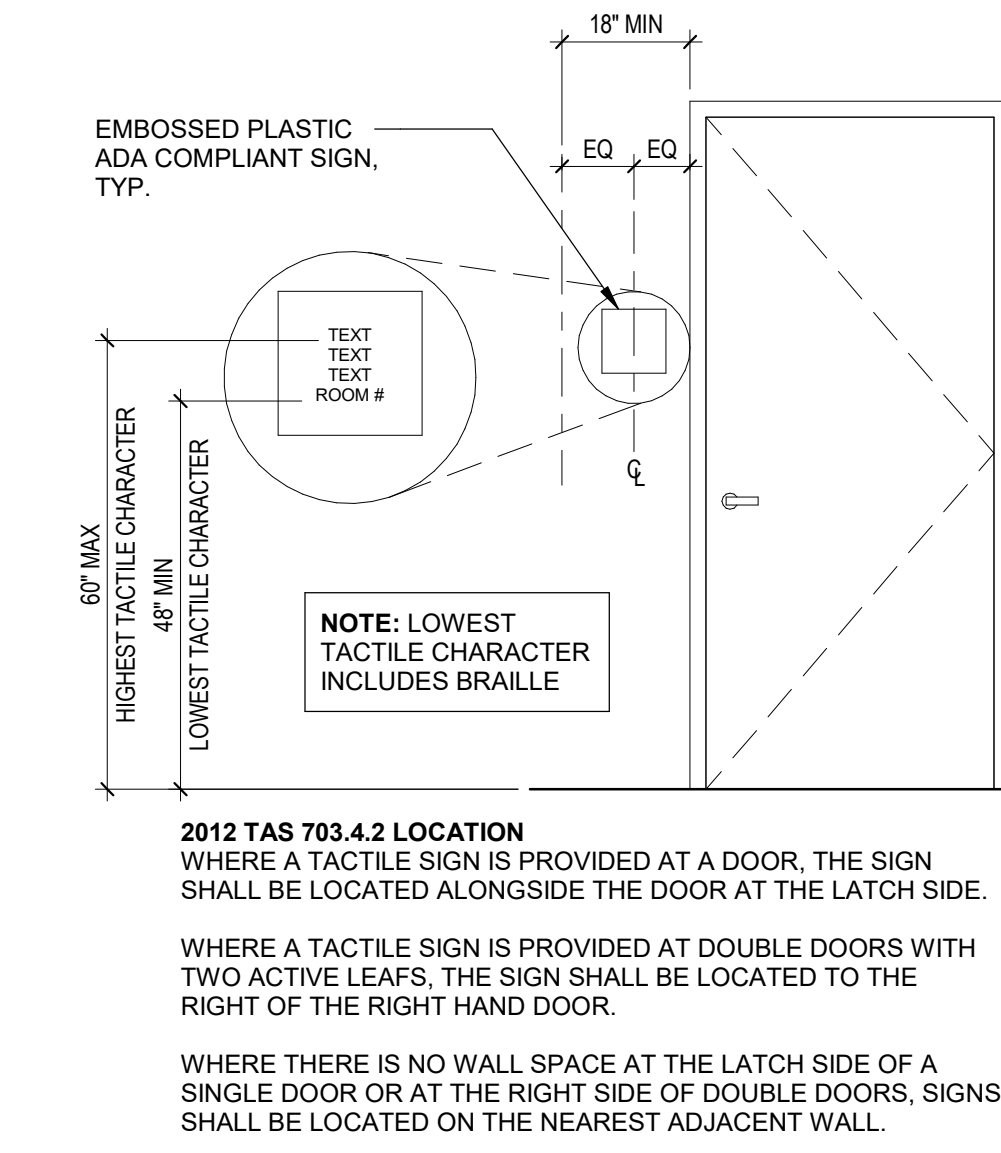
JOB 23168.0000  
DATE 07/27/2023  
SHEET

**A07-01**

**INT. MATERIALS LEGEND**



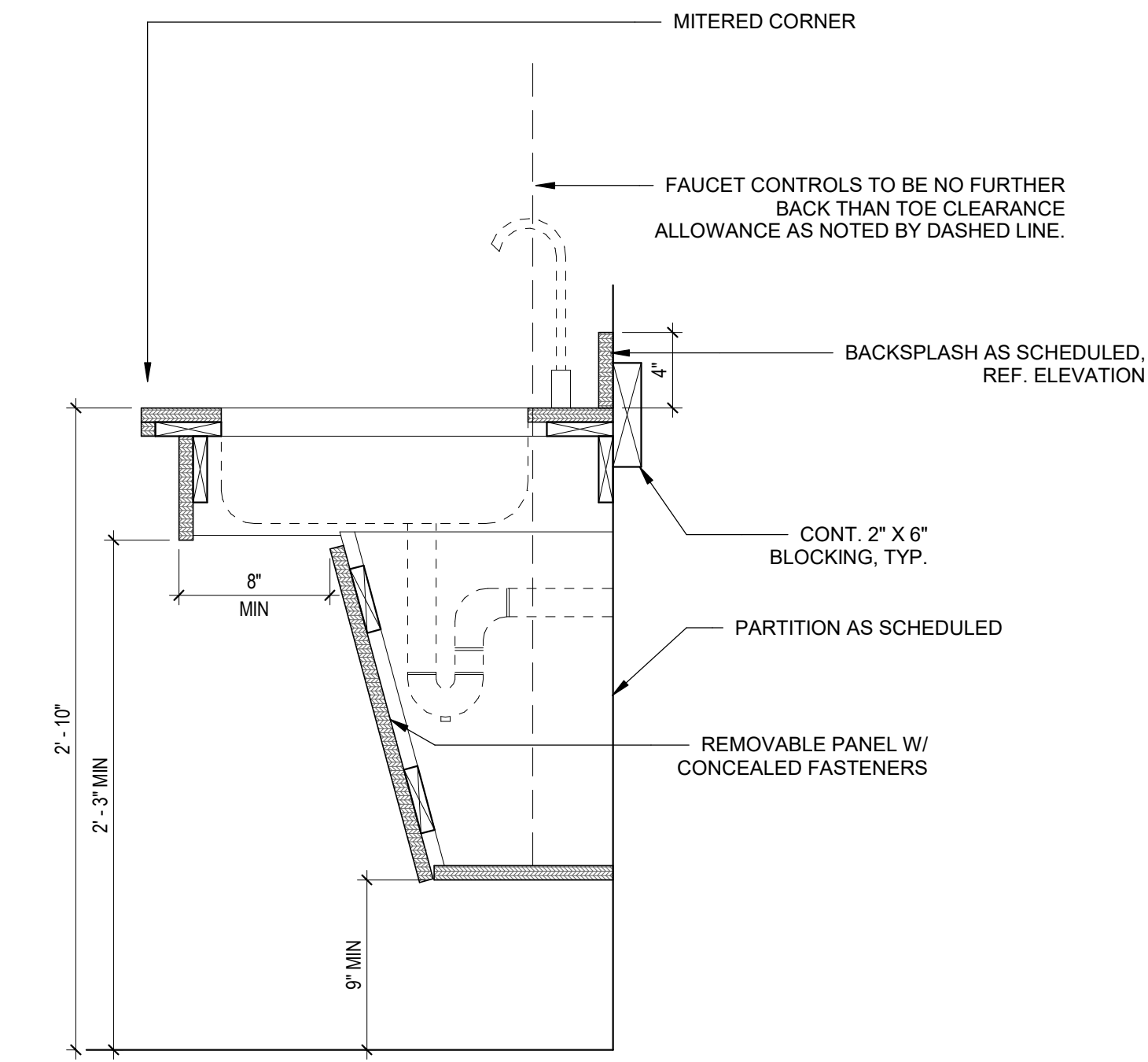
**11 WALL TILE SECTION**  
1" = 1'-0"



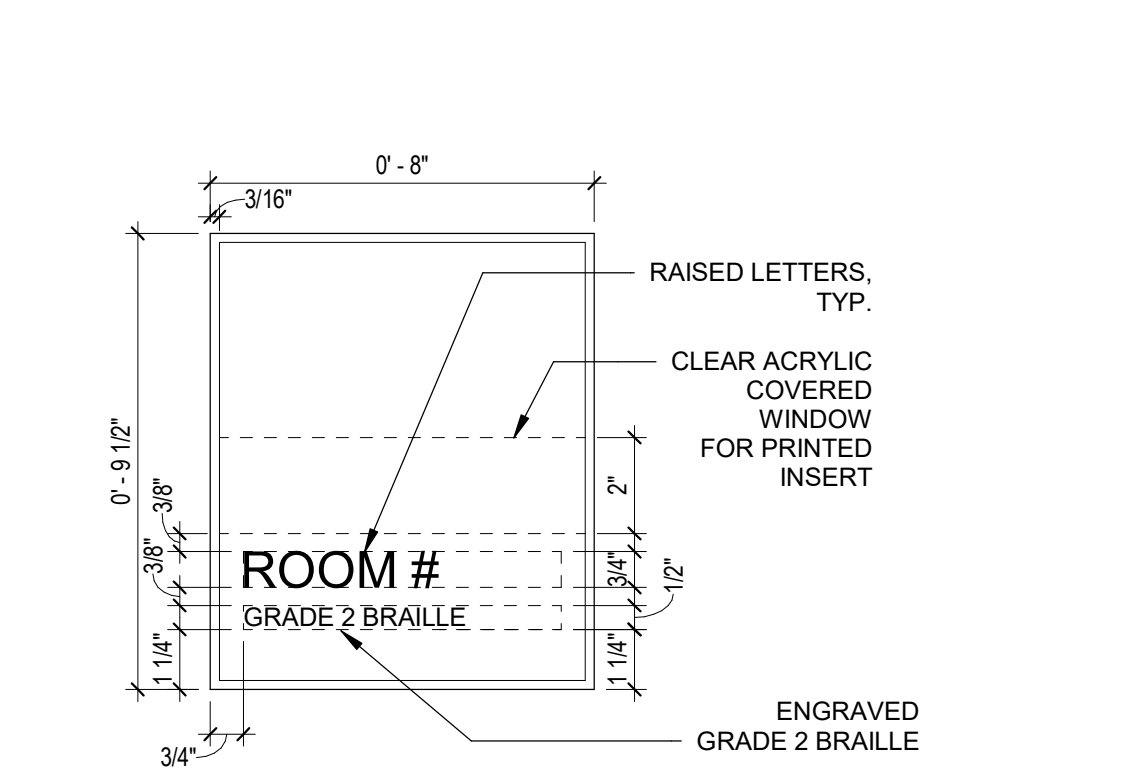
**10 SIGNAGE - LOCATION**  
1/2" = 1'-0"

**RESTROOM ACCESSORIES - IN PROJECT**

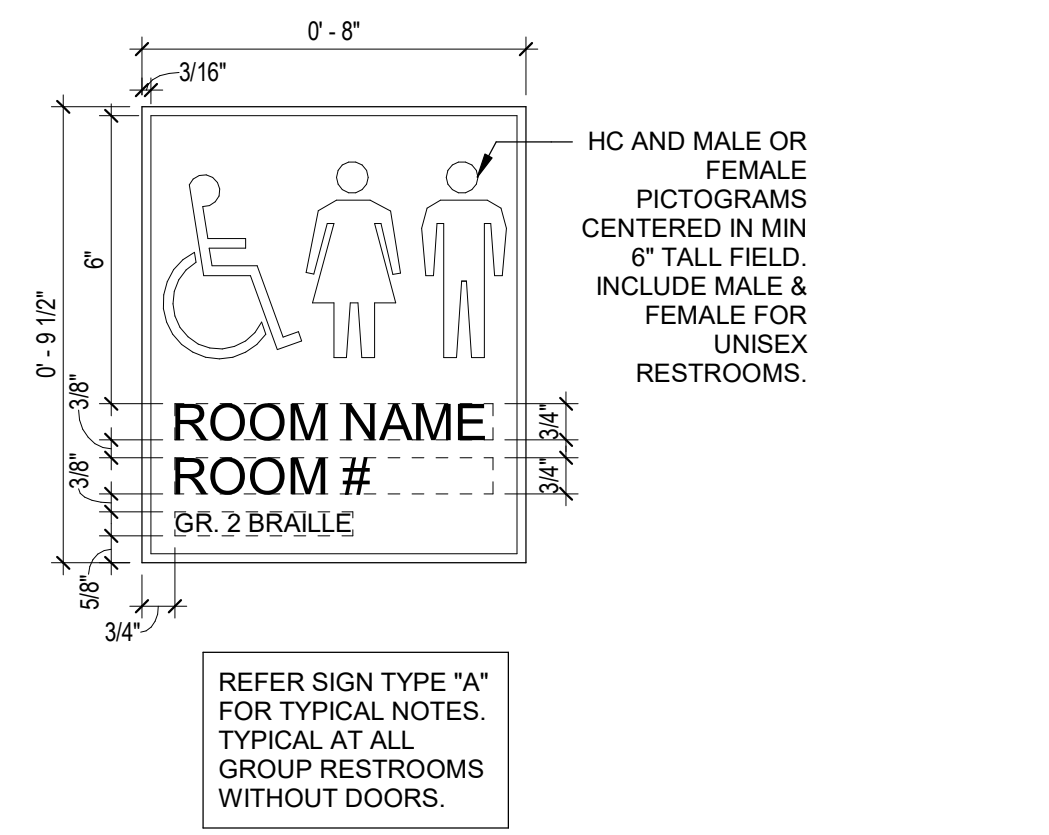
CODE	NAME
A1	Single Toilet Paper Dispenser
A1	Single Toilet Paper Dispenser
B1	Grab Bar
B1	Grab Bar
C1	Seat Cover Dispenser, Standard
D1	Sanitary Napkin Disposal, Surface Mounted
D1	Sanitary Napkin Disposal, Surface Mounted
EW-1	LZSTLWSP - LH/S
G1	Coat Hook, Surface Mounted
P1	Mirror Over Sink



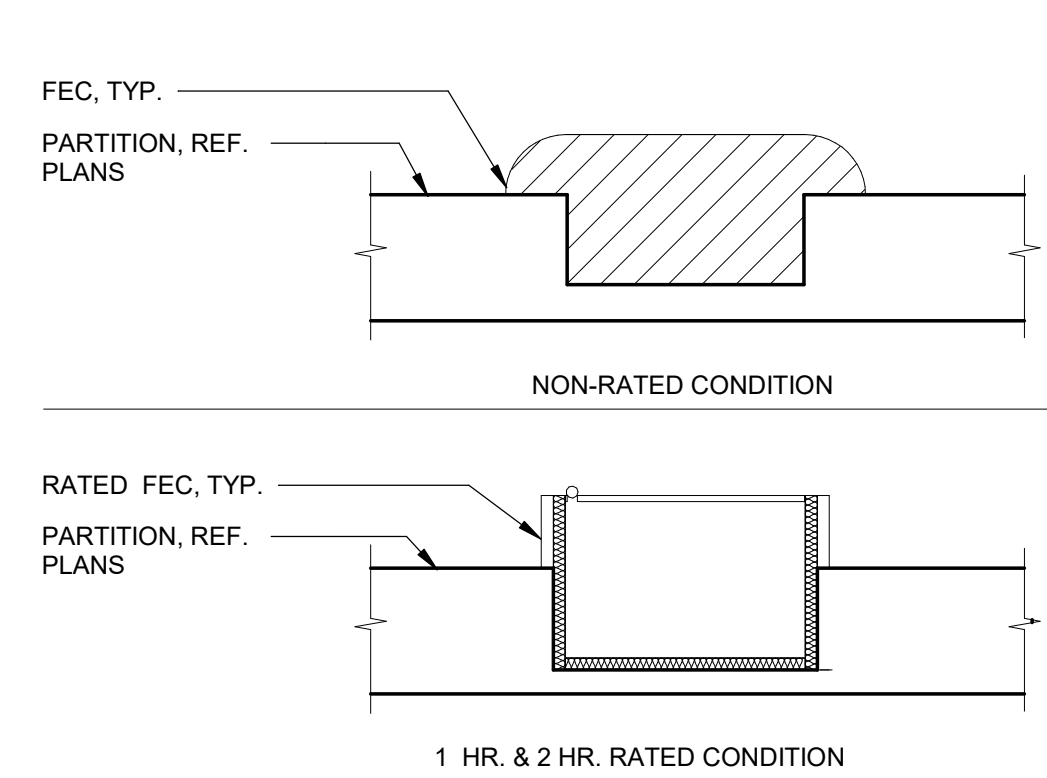
**12 TYPICAL ADA SINK SKIRT**  
1 1/2" = 1'-0"



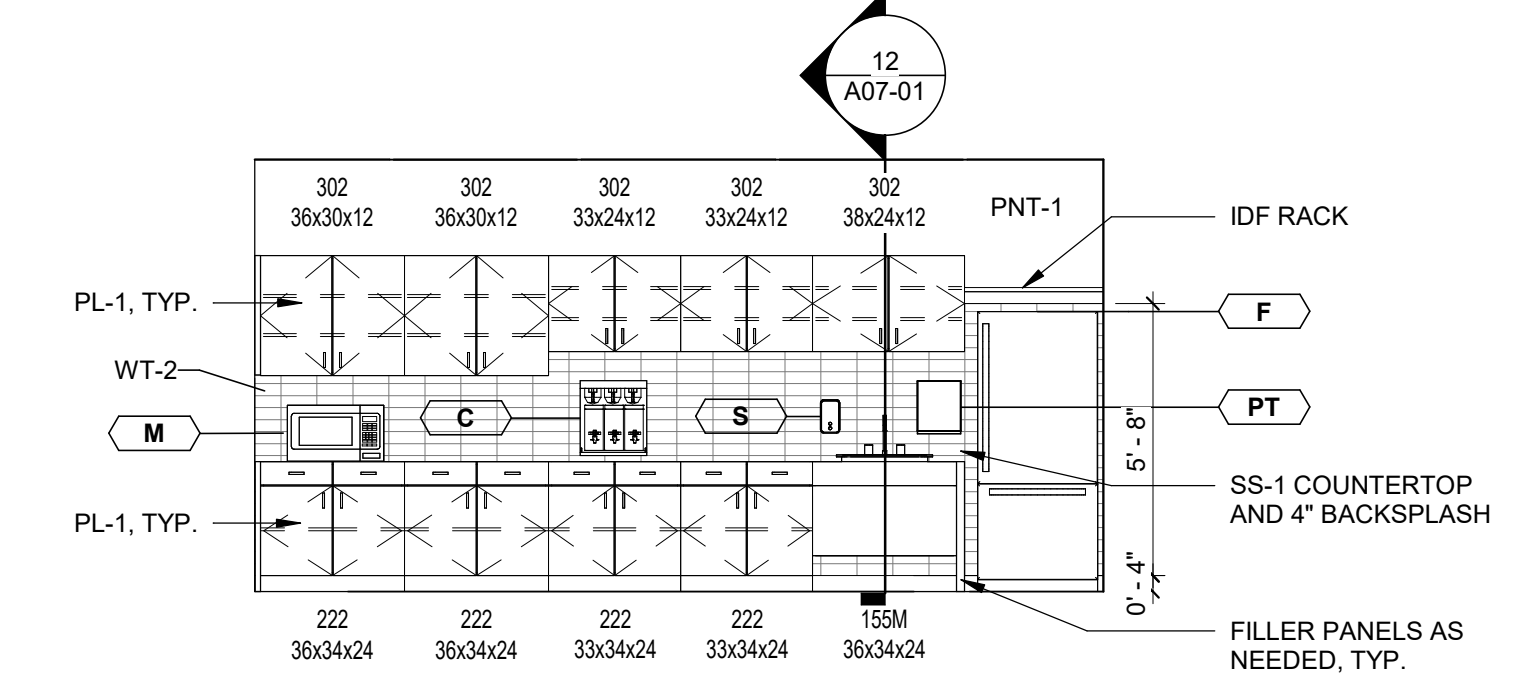
**09 SIGNAGE - TYPE A**  
3" = 1'-0"



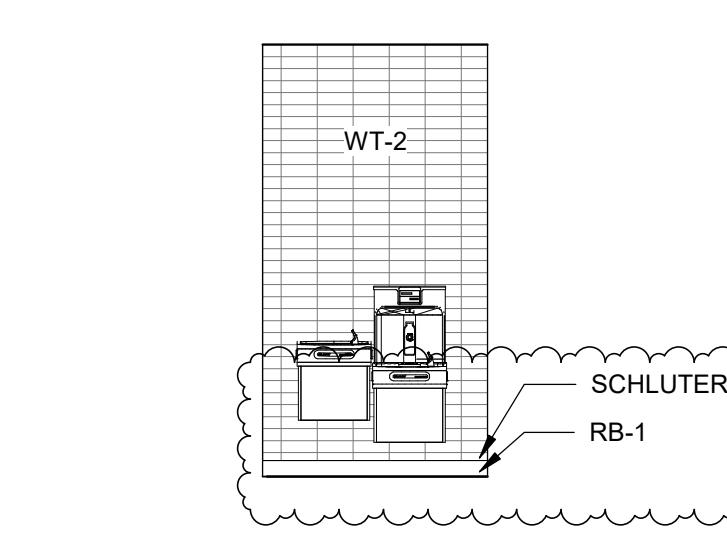
**08 SIGNAGE - TYPE B**  
3" = 1'-0"



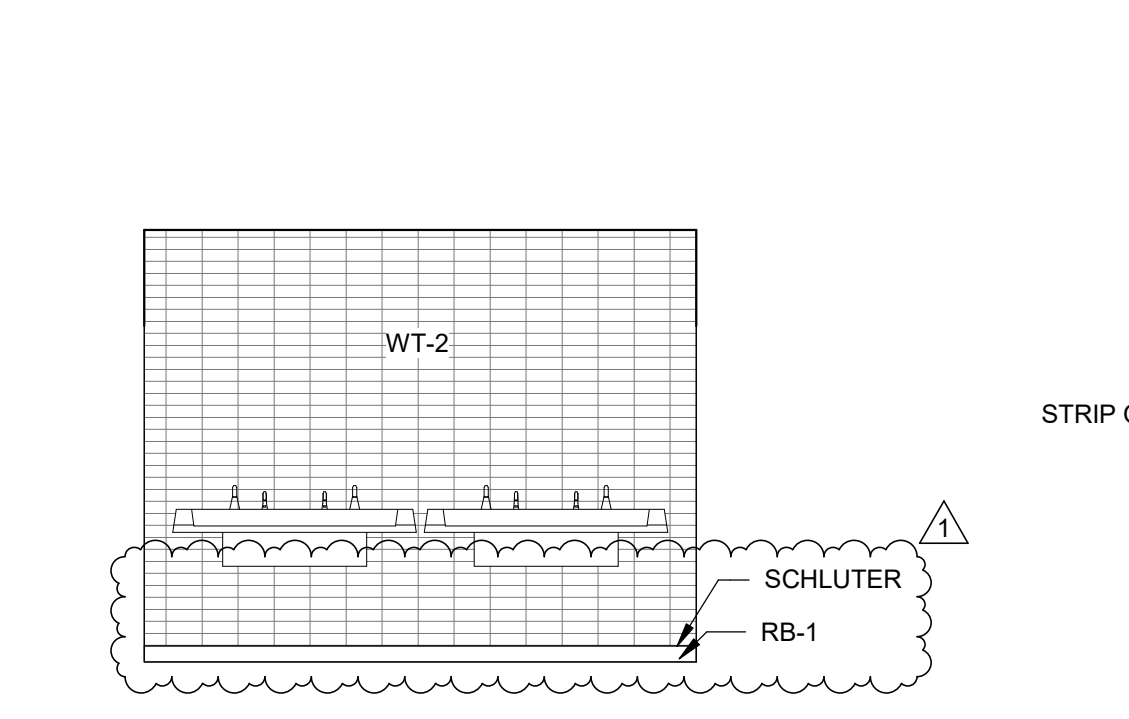
**07 FIRE EXTINGUISHER CABINET**  
1 1/2" = 1'-0"



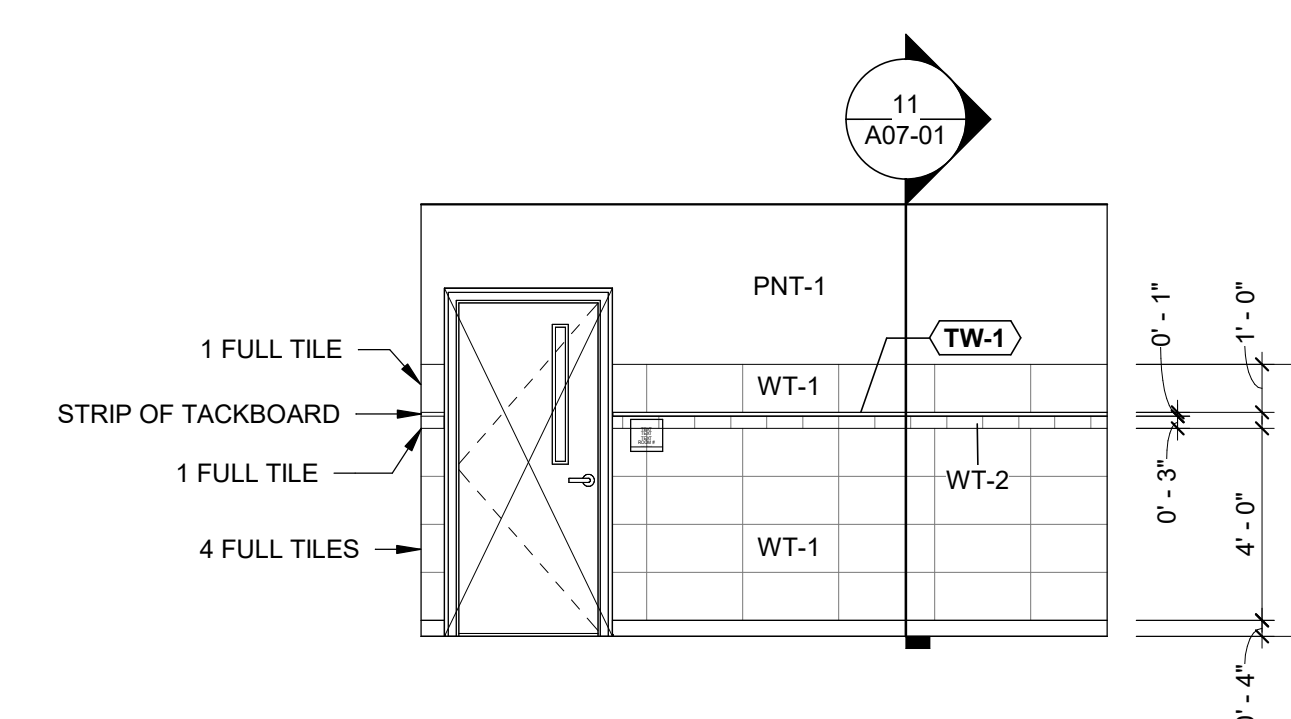
**06 110 - N - TEACHER LOUNGE/WORKROOM**  
1/4" = 1'-0"



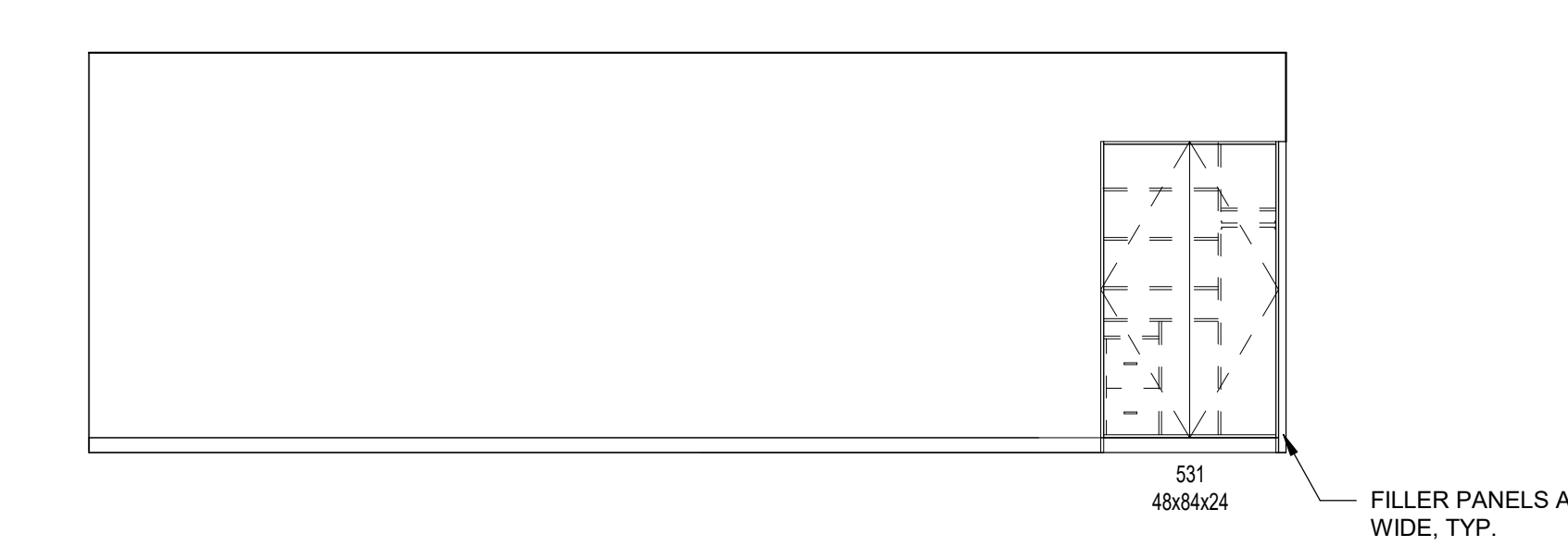
**05 117 - N - WATER FOUNTAIN**  
1/4" = 1'-0"



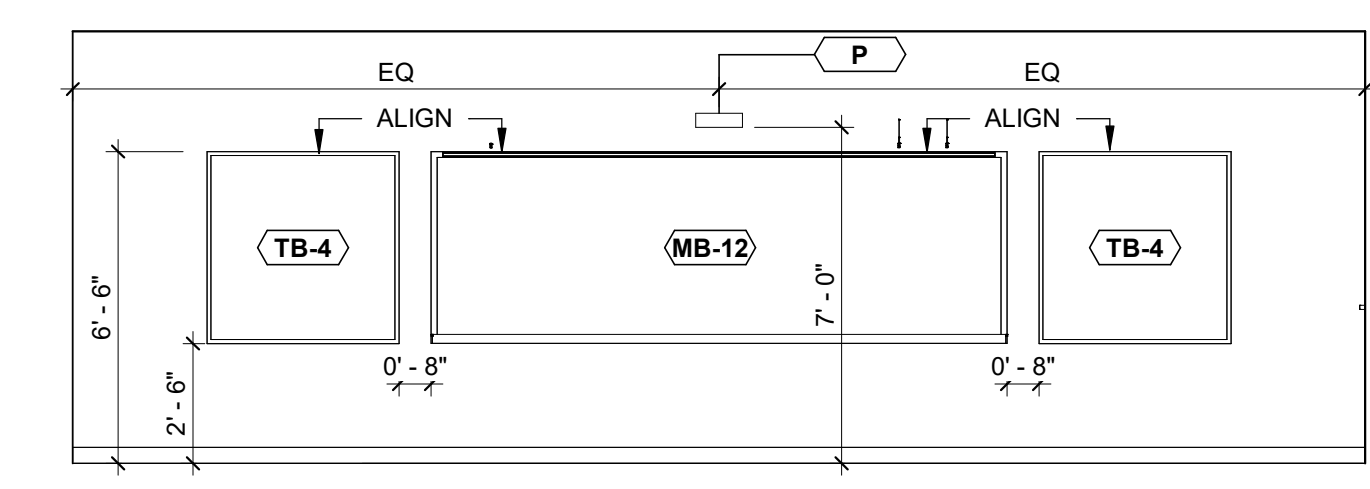
**04 117 - N - RR SINKS**  
1/4" = 1'-0"



**03 TYPICAL WAINSCOT**  
1/4" = 1'-0"



**02 TYPICAL SECONDARY TEACHING WALL**  
1/4" = 1'-0"



**01 TYPICAL TEACHING WALL**  
1/4" = 1'-0"